



Munchkin

Detailed Incident Report

*Will Spyrison
USFS - Forest Service
Dec 30, 2014*

Incident Name	Munchkin
Incident Number	678
PCode	P53789
Jurisdiction	Forest Service

Significant Times

Phase Changes	
Incident Started	Dec 29 21:34

Size-Up Report

Size-Up		Dec 29 21:46
Commander	Will Spyrison	
Jurisdiction	Forest Service	
Type	Vehicle / Vegetation Fire	
Status	Rapid	
Fuel Type	Heavy Brush	
Aspect	South	
Location	34.2663°, -119.2428° Township\Range: CA27 02N 22W	
Size	15.00 acres	
Best Access	210 Freeway to Angeles Crest Highway to mile marker 29.59.	
Special Hazards	Down Powerlines	

Planning Check		Dec 29 21:36
Environmentally Sensitive Areas?	Unknown	
Potential Structure Loss?	Yes	
Potential Life-Safety Issues?	Yes	
Are Current Available Resources Adequate?	No	
Resistency to Control?	High	
Are Additional Agencies Responding?	3+	



Incident Name	Munchkin
Incident Number	678
PCode	P53789
Jurisdiction	Forest Service

Complexity Analysis		Dec 29 21:39
Fire burning or threatening more than one jurisdiction and potential for unified command with different or conflicting management objectives		Yes
Urban interface: structures, development, recreational facilities, or potential for evacuation		Yes
Weather forecast indicating no significant relief or worsening conditions		Yes
Fuel is extremely dry and susceptible to long-range spotting or you are currently experiencing extreme fire behavior		Yes

Weather Report		Dec 29 21:37
Temp. (dry)	99°F	
Temp. (wet)	67°F	
Dew Point	47°F	
Relative Humidity	17%	
Wind	North-East @ 4 mph	
Aspect	South	
Flame Length	Over 8'	
Slope	Over 30%	
Spreading	Extreme	



Incident Name	Munchkin
Incident Number	678
PCode	P53789
Jurisdiction	Forest Service

Resource - ANF Engine 10	
Num. People	5
Local	Yes
Type	Engine Company - Type 3
Status	On-scene - Work - Division A
Time Ordered	Dec 29 21:37
Arrived	Dec 29 22:02
Assignment	Division A
Last Briefing	Dec 29 22:02
History	Dec 29 21:37 - Stand-by Dec 29 22:02 - Work Period Dec 29 22:02 - Work Period Dec 29 22:02 - (unknown) Dec 29 22:02 - Crew Briefing

Resource - ANF Engine 11	
Num. People	5
Local	Yes
Type	Engine Company - Type 3
Status	On-scene - Work - Division Z
Time Ordered	Dec 29 21:37
Arrived	Dec 29 22:03
Assignment	Division Z
Last Briefing	Dec 29 22:05
History	Dec 29 21:37 - Stand-by Dec 29 22:03 - Work Period Dec 29 22:03 - (unknown) Dec 29 22:05 - Crew Briefing



Incident Name	Munchkin
Incident Number	678
PCode	P53789
Jurisdiction	Forest Service

Resource - Division 1	
Num. People	1
Local	Yes
Type	Chief Officer
Status	On-scene - Work - Incident Commander
Time Ordered	Dec 29 21:37
Arrived	Dec 29 22:36
Assignment	Incident Commander
Last Briefing	Dec 29 22:36
History	Dec 29 21:37 - Stand-by Dec 29 22:36 - Work Period Dec 29 22:36 - Crew Briefing Dec 29 22:37 - (unknown) Dec 29 22:37 - Work Period

Resource - Helicopter 530	
Num. People	10
Local	Yes
Type	Helicopter
Status	On-scene - Work - Division Z
Time Ordered	Dec 29 21:37
Arrived	Dec 29 22:03
Assignment	Division Z
Last Briefing	Dec 29 22:05
History	Dec 29 21:37 - Stand-by Dec 29 22:03 - Work Period Dec 29 22:03 - (unknown) Dec 29 22:05 - Crew Briefing



Incident Name	Munchkin
Incident Number	678
PCode	P53789
Jurisdiction	Forest Service

Resource - Patrol 11	
Num. People	1
Local	Yes
Type	Brush Patrol - Type 6
Status	On-scene - Work - Point of Origin Protection
Time Ordered	Dec 29 21:37
Arrived	Dec 29 22:02
Assignment	Point of Origin Protection
Last Briefing	Dec 29 22:02
History	Dec 29 21:37 - Stand-by Dec 29 22:02 - Work Period Dec 29 22:02 - Crew Briefing Dec 29 22:03 - (unknown) Dec 29 22:03 - Work Period

Resource - Battalion 12	
Num. People	1
Local	Yes
Type	Chief Officer
Status	On-scene - Work - Division A
Time Ordered	Dec 29 21:37
Arrived	Dec 29 22:04
Assignment	Division A
Last Briefing	Dec 29 22:04
History	Dec 29 21:37 - Stand-by Dec 29 22:04 - Work Period Dec 29 22:04 - (unknown) Dec 29 22:04 - Work Period Dec 29 22:04 - Crew Briefing



Incident Name	Munchkin
Incident Number	678
PCode	P53789
Jurisdiction	Forest Service

Resource - LTHS	
Num. People	20
Local	Yes
Type	Hot-Shot Hand Crew - Type 1
Status	On-scene - Work - Division A
Time Ordered	Dec 29 21:37
Arrived	Dec 29 22:02
Assignment	Division A
Last Briefing	Dec 29 22:02
History	Dec 29 21:37 - Stand-by Dec 29 22:02 - Work Period Dec 29 22:02 - Work Period Dec 29 22:02 - (unknown) Dec 29 22:02 - Crew Briefing

Resource - Patrol 12	
Num. People	1
Local	Yes
Type	Brush Patrol - Type 6
Status	On-scene - Work - Fire Investigation
Time Ordered	Dec 29 21:37
Arrived	Dec 29 22:01
Assignment	Fire Investigation
Last Briefing	Dec 29 22:01
History	Dec 29 21:37 - Stand-by Dec 29 22:01 - Work Period Dec 29 22:01 - (unknown) Dec 29 22:01 - Work Period Dec 29 22:01 - Crew Briefing Dec 29 22:02 - (unknown) Dec 29 22:02 - Work Period



Incident Name	Munchkin
Incident Number	678
PCode	P53789
Jurisdiction	Forest Service

Resource - ANF Engine 12	
Num. People	5
Local	Yes
Type	Engine Company - Type 3
Status	On-scene - Work - Division Z
Time Ordered	Dec 29 21:37
Arrived	Dec 29 22:03
Assignment	Division Z
Last Briefing	Dec 29 22:05
History	Dec 29 21:37 - Stand-by Dec 29 22:03 - Work Period Dec 29 22:03 - (unknown) Dec 29 22:05 - Crew Briefing

Resource - ANF Engine 112	
Num. People	5
Local	Yes
Type	Engine Company - Type 3
Status	On-scene - Work - Division A
Time Ordered	Dec 29 21:37
Arrived	Dec 29 22:02
Assignment	Division A
Last Briefing	Dec 29 22:02
History	Dec 29 21:37 - Stand-by Dec 29 22:02 - Work Period Dec 29 22:02 - Work Period Dec 29 22:02 - (unknown) Dec 29 22:02 - Crew Briefing



Incident Name	Munchkin
Incident Number	678
PCode	P53789
Jurisdiction	Forest Service

Resource - ANF Engine 13	
Num. People	5
Local	Yes
Type	Engine Company - Type 3
Status	On-scene - Work - Division Z
Time Ordered	Dec 29 21:37
Arrived	Dec 29 22:03
Assignment	Division Z
Last Briefing	Dec 29 22:05
History	Dec 29 21:37 - Stand-by Dec 29 22:03 - Work Period Dec 29 22:03 - (unknown) Dec 29 22:05 - Crew Briefing

Resource - BDHS	
Num. People	20
Local	Yes
Type	Hot-Shot Hand Crew - Type 1
Status	On-scene - Work - Division Z
Time Ordered	Dec 29 21:37
Arrived	Dec 29 22:03
Assignment	Division Z
Last Briefing	Dec 29 22:05
History	Dec 29 21:37 - Stand-by Dec 29 22:03 - Work Period Dec 29 22:03 - (unknown) Dec 29 22:05 - Crew Briefing



Incident Name	Munchkin
Incident Number	678
PCode	P53789
Jurisdiction	Forest Service

Objectives

Operational Objective Keep Fire South of Angeles Forest Highway <div style="text-align: right; font-size: small;">Created: Dec 29 21:42</div>	
Operational Objective Keep Fire West of Angeles Crest Highway <div style="text-align: right; font-size: small;">Created: Dec 29 21:42</div>	
Operational Objective Keep Fire North of the 210 Freeway <div style="text-align: right; font-size: small;">Created: Dec 29 21:41</div>	
Operational Objective Keep Fire East of Little Tujunga Canyon Road <div style="text-align: right; font-size: small;">Created: Dec 29 21:42</div>	
Plan Direct attack with hoselays and handline construction on Division A Direct attack with hoselays and handline construction on Division Z. Where direct attack is not possible construct indirect fire line and fire out the fire line.	Contingency Plan Disengage fireline regroup at Angeles Crest Highway for a larger fire. Fire out Angeles Crest Highway from mile marker 29.59 to Angeles Crest Highway and the Forest Highway.
Created: Dec 29 21:43	
Hazard Down Powerlines	Mitigation Plan Contact Dispatch have them contact Southern California and de-energize the powerlines
Created: Dec 29 21:44	



Incident Name	Munchkin
Incident Number	678
PCode	P53789
Jurisdiction	Forest Service

Events

ICS 214

Time	Type	Information
Dec 29 21:54	Hazard Mitigation	Contacted Dispatch have them contact Southern California and de-energize the powerlines on Division A
Dec 29 22:06	Logistics	Ordered 150 sack lunches and water
Dec 29 22:08	Spot Fire	Spot Fire on Division Z - Spreading North East
		Major Risk: Dec 29 22:09 - Present
Dec 29 22:09	Injury	Firefighter Engine 11 broken leg Division Z
Dec 29 22:11	Spot Fire	Spot Fire on Division A - Spreading North West
		Major Risk: Dec 29 22:35 - Present



Incident Name	Munchkin
Incident Number	678
PCode	P53789
Jurisdiction	Forest Service

Objectives

ICS 202

<p>Management Objective</p> <p>Maintain positive community relations</p> <p>Created: Dec 29 21:40</p>
<p>Management Objective</p> <p>Fire suppression decisions will be fiscally responsible</p> <p>Created: Dec 29 21:41</p>
<p>Management Objective</p> <p>Adhere to the 2:1 work-rest guidelines</p> <p>Created: Dec 29 21:40</p>
<p>Management Objective</p> <p>Provide for Public and Incident Safety</p> <p>Created: Dec 29 21:34</p>
<p>Operational Objective</p> <p>Keep Fire South of Angeles Forest Highway</p> <p>Created: Dec 29 21:42</p>
<p>Operational Objective</p> <p>Keep Fire West of Angeles Crest Highway</p> <p>Created: Dec 29 21:42</p>
<p>Operational Objective</p> <p>Keep Fire North of the 210 Freeway</p> <p>Created: Dec 29 21:41</p>
<p>Operational Objective</p> <p>Keep Fire East of Little Tujunga Canyon Road</p> <p>Created: Dec 29 21:42</p>
<p>Operational Objective</p> <p>Maintain structure protection for the community of La Canada</p> <p>Created: Dec 30 13:04</p>



Incident Name	Munchkin
Incident Number	678
PCode	P53789
Jurisdiction	Forest Service

<p>Plan</p> <p>Direct attack with hoselays and handline construction on Division A</p> <p>Direct attack with hoselays and handline construction on Division Z. Where direct attack is not possible construct indirect fire line and fire out the fire line.</p>	<p>Contingency Plan</p> <p>Disengage fireline regroup at Angeles Crest Highway for a larger fire. Fire out Angeles Crest Highway from mile marker 29.59 to Angeles Crest Highway and the Forest Highway.</p>
<p>Created: Dec 29 21:43</p>	

<p>Hazard</p> <p>Down Powerlines</p>	<p>Mitigation Plan</p> <p>Contact Dispatch have them contact Southern California and de-energize the powerlines</p>
<p>Created: Dec 29 21:44</p>	



Incident Name	Munchkin
Incident Number	678
PCode	P53789
Jurisdiction	Forest Service

Analysis

Complexity Analysis		Dec 29 21:39
Fire burning or threatening more than one jurisdiction and potential for unified command with different or conflicting management objectives		Yes
Urban interface: structures, development, recreational facilities, or potential for evacuation		Yes
Weather forecast indicating no significant relief or worsening conditions		Yes
Fuel is extremely dry and susceptible to long-range spotting or you are currently experiencing extreme fire behavior		Yes

Planning Check		Dec 29 21:36
Environmentally Sensitive Areas?		Unknown
Potential Structure Loss?		Yes
Potential Life-Safety Issues?		Yes
Are Current Available Resources Adequate?		No
Resistancy to Control?		High
Are Additional Agencies Responding?		3+



Incident Name	Munchkin
Incident Number	678
PCode	P53789
Jurisdiction	Forest Service

Resources

ICS 204

ANF Engine 10	
Num. People	5
Local	Yes
Type	Engine Company - Type 3
Status	On-scene - Work - Division A
Time Ordered	Dec 29 21:37
Arrived	Dec 29 22:02
Assignment	Division A
Last Briefing	Dec 29 22:02
History	Dec 29 21:37 - Stand-by Dec 29 22:02 - Work Period Dec 29 22:02 - Work Period Dec 29 22:02 - (unknown) Dec 29 22:02 - Crew Briefing

ANF Engine 11	
Num. People	5
Local	Yes
Type	Engine Company - Type 3
Status	On-scene - Work - Division Z
Time Ordered	Dec 29 21:37
Arrived	Dec 29 22:03
Assignment	Division Z
Last Briefing	Dec 29 22:05
History	Dec 29 21:37 - Stand-by Dec 29 22:03 - Work Period Dec 29 22:03 - (unknown) Dec 29 22:05 - Crew Briefing



Incident Name	Munchkin
Incident Number	678
PCode	P53789
Jurisdiction	Forest Service

Division 1	
Num. People	1
Local	Yes
Type	Chief Officer
Status	On-scene - Work - Incident Commander
Time Ordered	Dec 29 21:37
Arrived	Dec 29 22:36
Assignment	Incident Commander
Last Briefing	Dec 29 22:36
History	Dec 29 21:37 - Stand-by Dec 29 22:36 - Work Period Dec 29 22:36 - Crew Briefing Dec 29 22:37 - (unknown) Dec 29 22:37 - Work Period

Helicopter 530	
Num. People	10
Local	Yes
Type	Helicopter
Status	On-scene - Work - Division Z
Time Ordered	Dec 29 21:37
Arrived	Dec 29 22:03
Assignment	Division Z
Last Briefing	Dec 29 22:05
History	Dec 29 21:37 - Stand-by Dec 29 22:03 - Work Period Dec 29 22:03 - (unknown) Dec 29 22:05 - Crew Briefing



Incident Name	Munchkin
Incident Number	678
PCode	P53789
Jurisdiction	Forest Service

Patrol 11	
Num. People	1
Local	Yes
Type	Brush Patrol - Type 6
Status	On-scene - Work - Point of Origin Protection
Time Ordered	Dec 29 21:37
Arrived	Dec 29 22:02
Assignment	Point of Origin Protection
Last Briefing	Dec 29 22:02
History	Dec 29 21:37 - Stand-by Dec 29 22:02 - Work Period Dec 29 22:02 - Crew Briefing Dec 29 22:03 - (unknown) Dec 29 22:03 - Work Period

Battalion 12	
Num. People	1
Local	Yes
Type	Chief Officer
Status	On-scene - Work - Division A
Time Ordered	Dec 29 21:37
Arrived	Dec 29 22:04
Assignment	Division A
Last Briefing	Dec 29 22:04
History	Dec 29 21:37 - Stand-by Dec 29 22:04 - Work Period Dec 29 22:04 - (unknown) Dec 29 22:04 - Work Period Dec 29 22:04 - Crew Briefing



Incident Name	Munchkin
Incident Number	678
PCode	P53789
Jurisdiction	Forest Service

Battalion 11	
Num. People	1
Local	Yes
Type	Chief Officer
Status	On-scene - Work - Division Z
Time Ordered	Dec 29 22:03
Arrived	Dec 29 22:03
Assignment	Division Z
Last Briefing	Dec 29 22:05
History	Dec 29 22:03 - Stand-by Dec 29 22:03 - Work Period Dec 29 22:04 - Work Period Dec 29 22:04 - Work Period Dec 29 22:05 - Crew Briefing Dec 29 22:05 - (unknown) Dec 29 22:05 - Work Period Dec 29 22:05 - (unknown) Dec 29 22:05 - Work Period Dec 29 22:05 - Crew Briefing

LTHS	
Num. People	20
Local	Yes
Type	Hot-Shot Hand Crew - Type 1
Status	On-scene - Work - Division A
Time Ordered	Dec 29 21:37
Arrived	Dec 29 22:02
Assignment	Division A
Last Briefing	Dec 29 22:02
History	Dec 29 21:37 - Stand-by Dec 29 22:02 - Work Period Dec 29 22:02 - Work Period Dec 29 22:02 - (unknown) Dec 29 22:02 - Crew Briefing



Incident Name	Munchkin
Incident Number	678
PCode	P53789
Jurisdiction	Forest Service

Patrol 12	
Num. People	1
Local	Yes
Type	Brush Patrol - Type 6
Status	On-scene - Work - Fire Investigation
Time Ordered	Dec 29 21:37
Arrived	Dec 29 22:01
Assignment	Fire Investigation
Last Briefing	Dec 29 22:01
History	Dec 29 21:37 - Stand-by Dec 29 22:01 - Work Period Dec 29 22:01 - (unknown) Dec 29 22:01 - Work Period Dec 29 22:01 - Crew Briefing Dec 29 22:02 - (unknown) Dec 29 22:02 - Work Period

ANF Engine 12	
Num. People	5
Local	Yes
Type	Engine Company - Type 3
Status	On-scene - Work - Division Z
Time Ordered	Dec 29 21:37
Arrived	Dec 29 22:03
Assignment	Division Z
Last Briefing	Dec 29 22:05
History	Dec 29 21:37 - Stand-by Dec 29 22:03 - Work Period Dec 29 22:03 - (unknown) Dec 29 22:05 - Crew Briefing



Incident Name	Munchkin
Incident Number	678
PCode	P53789
Jurisdiction	Forest Service

ANF Engine 112	
Num. People	5
Local	Yes
Type	Engine Company - Type 3
Status	On-scene - Work - Division A
Time Ordered	Dec 29 21:37
Arrived	Dec 29 22:02
Assignment	Division A
Last Briefing	Dec 29 22:02
History	Dec 29 21:37 - Stand-by Dec 29 22:02 - Work Period Dec 29 22:02 - Work Period Dec 29 22:02 - (unknown) Dec 29 22:02 - Crew Briefing

ANF Engine 13	
Num. People	5
Local	Yes
Type	Engine Company - Type 3
Status	On-scene - Work - Division Z
Time Ordered	Dec 29 21:37
Arrived	Dec 29 22:03
Assignment	Division Z
Last Briefing	Dec 29 22:05
History	Dec 29 21:37 - Stand-by Dec 29 22:03 - Work Period Dec 29 22:03 - (unknown) Dec 29 22:05 - Crew Briefing



Incident Name	Munchkin
Incident Number	678
PCode	P53789
Jurisdiction	Forest Service

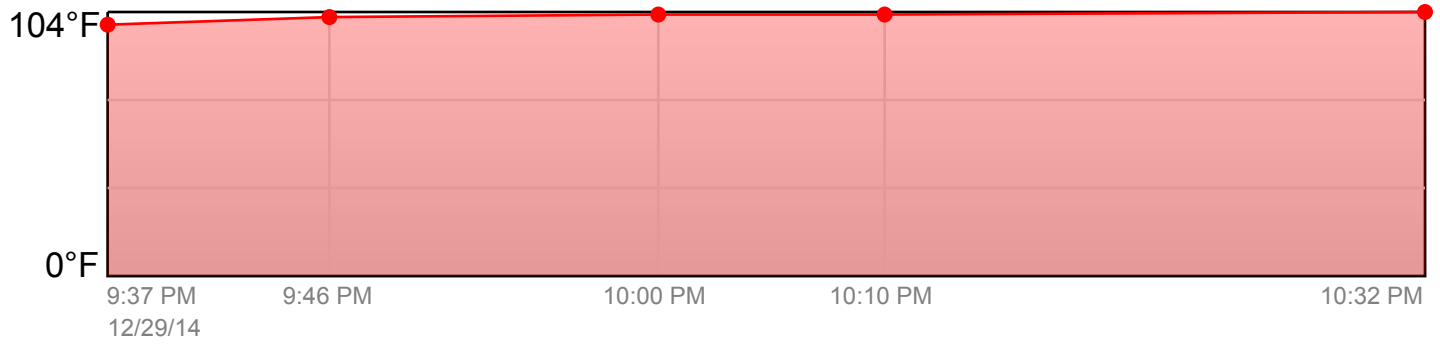
BDHS	
Num. People	20
Local	Yes
Type	Hot-Shot Hand Crew - Type 1
Status	On-scene - Work - Division Z
Time Ordered	Dec 29 21:37
Arrived	Dec 29 22:03
Assignment	Division Z
Last Briefing	Dec 29 22:05
History	Dec 29 21:37 - Stand-by Dec 29 22:03 - Work Period Dec 29 22:03 - (unknown) Dec 29 22:05 - Crew Briefing



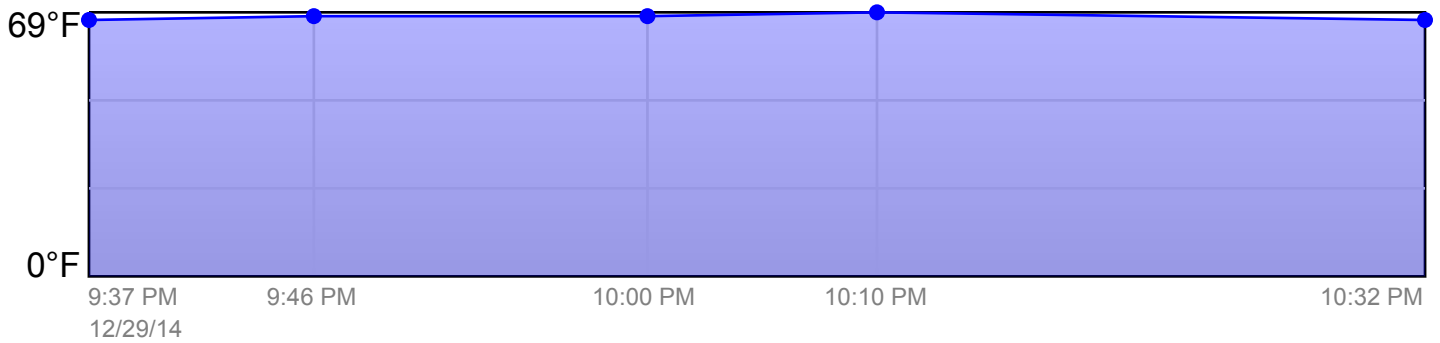
Incident Name	Munchkin
Incident Number	678
PCode	P53789
Jurisdiction	Forest Service

Weather Summary

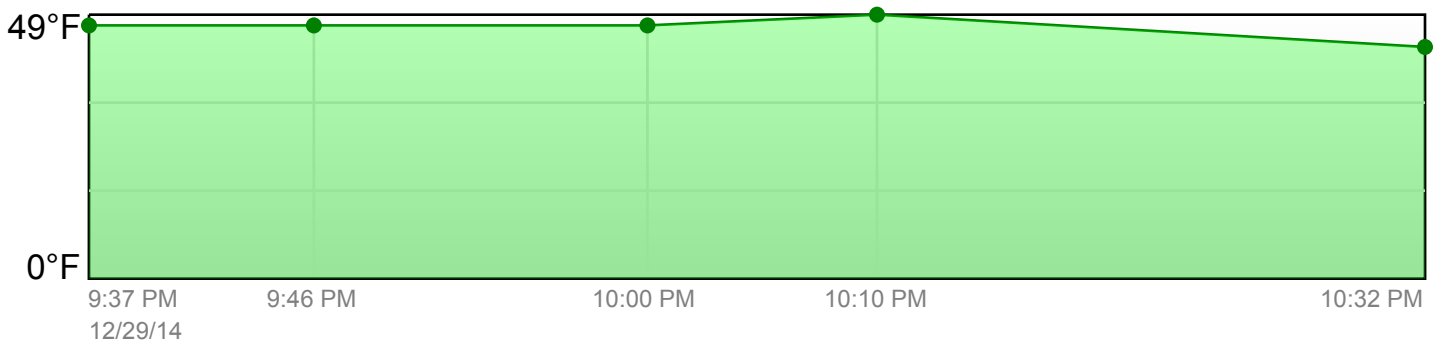
Temperature (Dry Bulb)



Temperature (Wet Bulb)

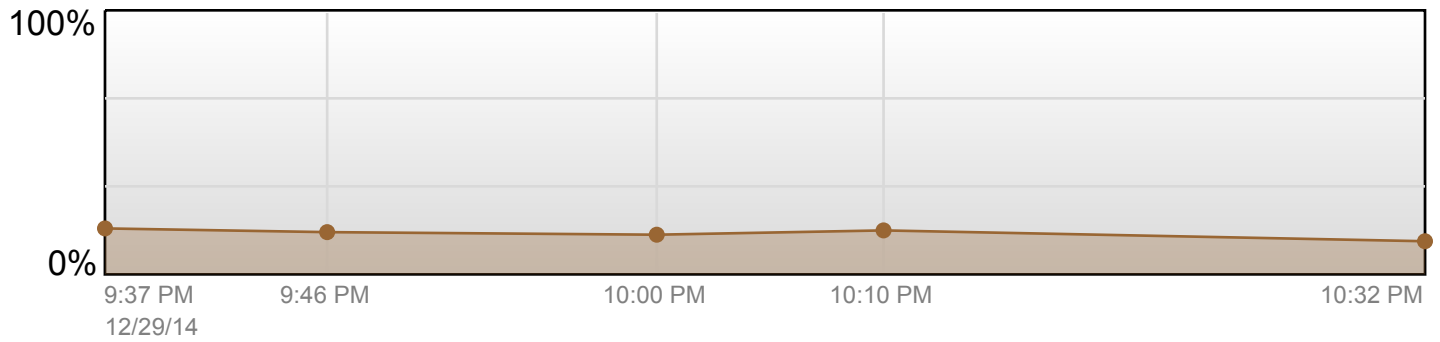


Dewpoint

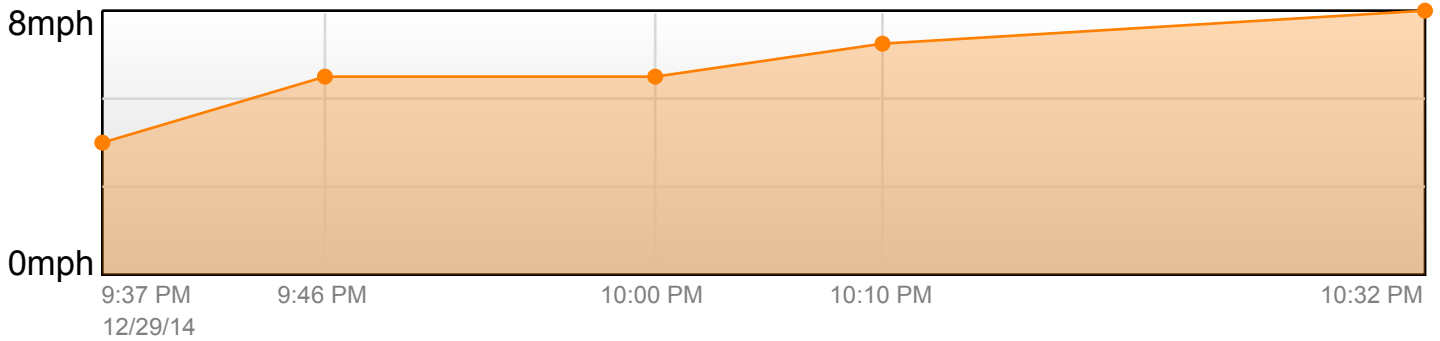


Incident Name	Munchkin
Incident Number	678
PCode	P53789
Jurisdiction	Forest Service

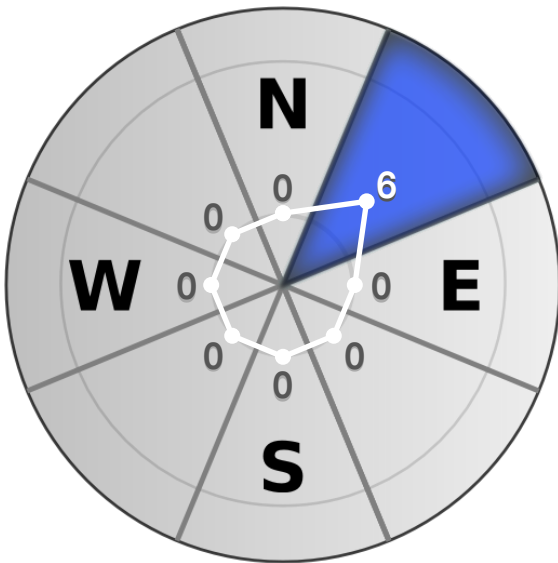
Relative Humidity



Wind Speed



Wind Direction



Incident Name	Munchkin
Incident Number	678
PCode	P53789
Jurisdiction	Forest Service

Weather Details

Weather Report		Dec 29 21:37
Temp. (dry)	99°F	
Temp. (wet)	67°F	
Dew Point	47°F	
Relative Humidity	17%	
Wind	North-East @ 4 mph	
Aspect	South	
Flame Length	Over 8'	
Slope	Over 30%	
Spreading	Extreme	

Weather Report		Dec 29 21:46
Temp. (dry)	102°F	
Temp. (wet)	68°F	
Dew Point	47°F	
Relative Humidity	15%	
Wind	North-East @ 5 mph	
Aspect	South	
Flame Length	Over 8'	
Slope	Over 30%	
Spreading	Extreme	



Incident Name	Munchkin
Incident Number	678
PCode	P53789
Jurisdiction	Forest Service

Weather Report		Dec 29 22:00
Temp. (dry)	103°F	
Temp. (wet)	68°F	
Dew Point	47°F	
Relative Humidity	15%	
Wind	North-East @ 5 mph	
Aspect	South	
Flame Length	Over 8'	
Slope	Over 30%	
Spreading	Extreme	

Weather Report		Dec 29 22:10
Temp. (dry)	103°F	
Temp. (wet)	69°F	
Dew Point	49°F	
Relative Humidity	16%	
Wind	North-East @ 7 mph	
Aspect	South	
Flame Length	Over 8'	
Slope	Over 30%	
Spreading	Extreme	



Incident Name	Munchkin
Incident Number	678
PCode	P53789
Jurisdiction	Forest Service

Weather Report		Dec 29 22:32
Temp. (dry)	104°F	
Temp. (wet)	67°F	
Dew Point	43°F	
Relative Humidity	12%	
Wind	North-East @ 8 mph	
Aspect	South	
Flame Length	Over 8'	
Slope	Over 30%	
Spreading	Extreme	



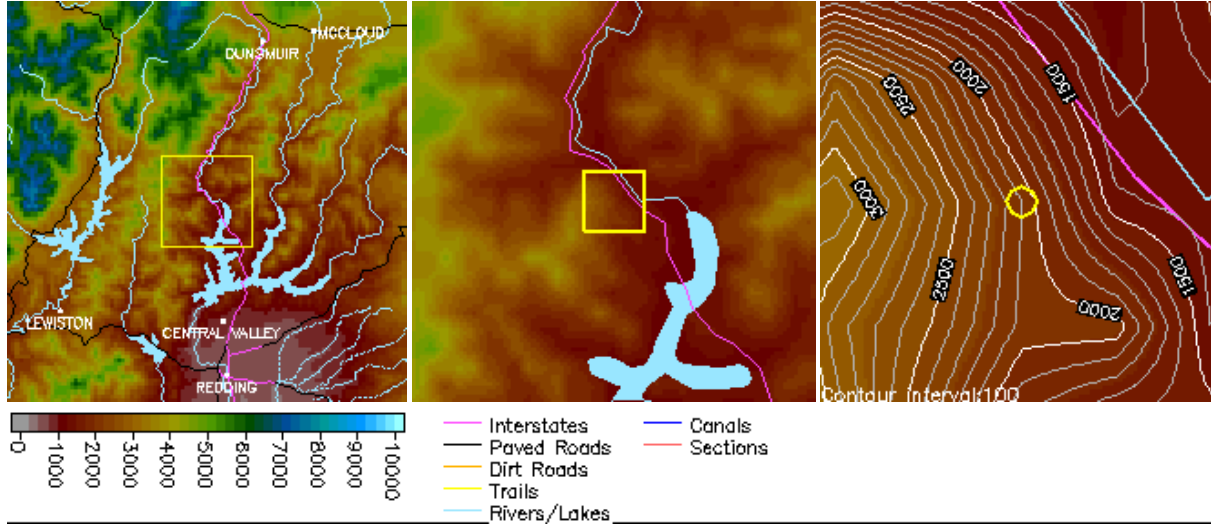
Incident Name	Munchkin
Incident Number	678
PCode	P53789
Jurisdiction	Forest Service

Completed Spot Forecasts

North (Proposed ignition time: 900 PST 12/29/14) (Requested: 2010 PST 12/28/14)

Forecast complete at 2311 PST 12/28/14

Requested by: USFS



Location: Legal:T35N R5W SEC3(CA) Lat/Lon:40.9168/122.4167 Quad:Lamoine

Calculated: (40.9168°N 122.4167°W) (LAMOINE CA)

Elevation:1700-2740 Drainage:Sacramento River Aspect:E Size:10

Fuel Type:Brush (Partially Sheltered)

Observations:

Place	Elev	Time	Wind	Temp	Wetbulb	RH	Dewpt	Remarks
Antlers	1080	0900	N 4 g6	33		80	28	Clear
Antlers	1080	1500	SSE 2 g6	51		40	28	Clear
Sugarloaf	3260	0900	SSE 4 g7	41		60	28	Clear
Sugarloaf	3260	1500	SSE 7 G10	46		60	33	Clear

Requested Parameters

Remarks

XXX Sky / Weather
 XXX Temperature
 XXX Relative Humidity
 XXX 20-ft Wind
 ... Ridge Top Wind
 XXX Chance of Wetting Rain
 ... Lightning Activity Level
 XXX Smoke Dispersion

Antlers (CTANT) is closest in elevation to project site.
 Sugarloaf (SLFC1) is 2000' above project site

FORECAST:



Incident Name	Munchkin
Incident Number	678
PCode	P53789
Jurisdiction	Forest Service

IF CONDITIONS BECOME UNREPRESENTATIVE,
CONTACT THE NATIONAL WEATHER SERVICE.

SPOT FORECAST FOR NORTH...USFS
NATIONAL WEATHER SERVICE SACRAMENTO CA
1111 PM PST SUN DEC 28 2014

FORECAST IS BASED ON IGNITION TIME OF 0900 PST ON DECEMBER 29.
IF CONDITIONS BECOME UNREPRESENTATIVE...CONTACT THE NATIONAL WEATHER
SERVICE.

.DISCUSSION...

CANADIAN COLD FRONT OVER OREGON WILL BE DROPPING SOUTHWARD ACROSS
THE BURN SITE LATE TONIGHT AND TUESDAY. THIS WILL BRING MUCH COLDER
TEMPERATURES...LIGHT SPOTTY SHOWERS AND THEN DRY BRISK NORTHERLY
WINDS TO THE BURN SITE. THE CORE OF THE STRONGER WINDS IS FORECAST
TO REMAIN SOUTH OF THE BURN SITE ON TUESDAY...BUT CONFIDENCE IS LOW
TO MEDIUM ON THIS SPECIFIC DETAIL.

.TODAY (MONDAY)...

SKY/WEATHER.....MOSTLY SUNNY IN THE MORNING THEN BECOMING
PARTLY CLOUDY.

MAX TEMPERATURE.....46-51.

MIN HUMIDITY.....32-38 PERCENT.

WIND (20 FT).....

SLOPE/VALLEY.....NORTH WINDS UP TO 7 MPH.

CWR.....0 PERCENT.

MIXING HEIGHT.....RISING TO 1000-1500 FT AGL IN THE AFTERNOON.

MIXING WINDS.....NORTH UP TO 6 MPH.

.TONIGHT...

SKY/WEATHER.....MOSTLY CLOUDY. A SLIGHT CHANCE OF RAIN AND SNOW
SHOWERS IN THE EVENING.

MIN TEMPERATURE.....26-32.

MAX HUMIDITY.....50-60 PERCENT.

WIND (20 FT).....

SLOPE/VALLEY.....NORTHEAST WINDS 4 TO 10 MPH.

CWR.....10 PERCENT.

MIXING HEIGHT.....500-1000 FT AGL.

MIXING WINDS.....NORTHEAST 4 TO 9 MPH.

.TUESDAY...

SKY/WEATHER.....MOSTLY SUNNY.

MAX TEMPERATURE.....36-41.

MIN HUMIDITY.....22-29 PERCENT.

WIND (20 FT).....

SLOPE/VALLEY.....NORTH TO NORTHEAST WINDS 7 TO 12 MPH WITH
POSSIBLE GUSTS TO 20 MPH MAINLY IN THE
AFTERNOON.

CWR.....0 PERCENT.

MIXING HEIGHT.....RISING TO 1000-1500 FT AGL IN THE LATE MORNING
AND AFTERNOON.

MIXING WINDS.....NORTHEAST 10 TO 16 MPH.

FORECASTER...JHM

REQUESTED BY...ROBERT HOLT

REASON FOR REQUEST...PRESCRIBED



Incident Name	Munchkin
Incident Number	678
PCode	P53789
Jurisdiction	Forest Service

Please provide feedback:

Send Feedback

CANCEL

[*Printer Friendly Version of Forecast*](#)

[Back to Spot List](#) [Copy Info to New Spot Request](#)



National Oceanic and Atmospheric Administration (NOAA)

[Privacy Policy](#)

National Weather Service
Fire & Public Weather Services Branch
Page Author: NWS Internet Services Team
Page last updated at 5:57 am PST 3/5/07

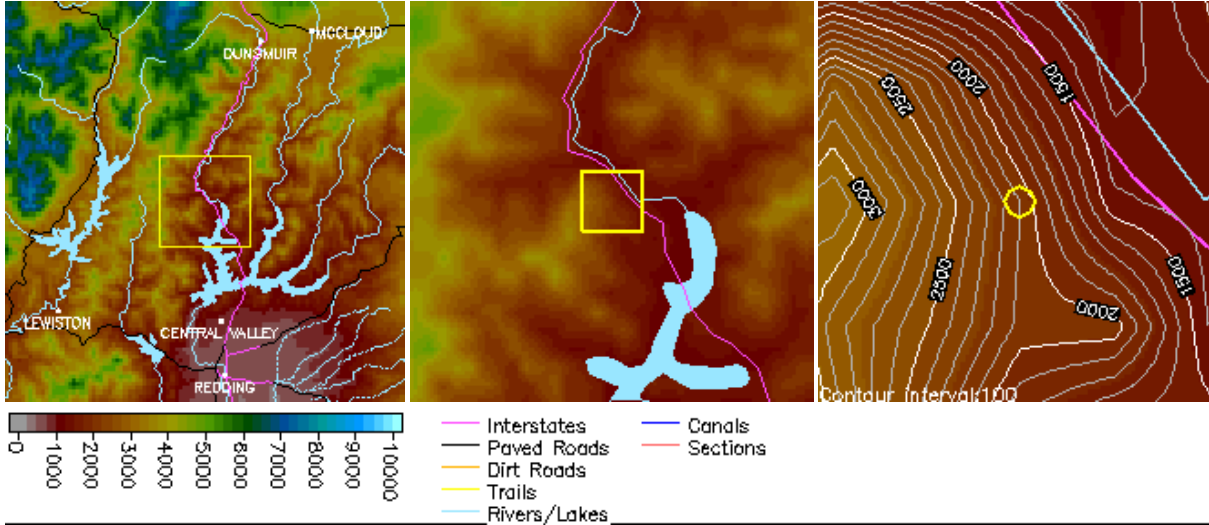


Incident Name	Munchkin
Incident Number	678
PCode	P53789
Jurisdiction	Forest Service

North (Proposed ignition time: 900 PST 12/29/14) (Requested: 2010 PST 12/28/14)

Forecast complete at 2311 PST 12/28/14

Requested by: USFS



Location: Legal:T35N R5W SEC3(CA) Lat/Lon:40.9168/122.4167 Quad:Lamoine

Calculated: (40.9168°N 122.4167°W) (LAMOINE CA)

Elevation:1700-2740 Drainage:Sacramento River Aspect:E Size:10

Fuel Type:Brush (Partially Sheltered)

Observations:

Place	Elev	Time	Wind	Temp	Wetbulb	RH	Dewpt	Remarks
Antlers	1080	0900	N 4 g6	33		80	28	Clear
Antlers	1080	1500	SSE 2 g6	51		40	28	Clear
Sugarloaf	3260	0900	SSE 4 g7	41		60	28	Clear
Sugarloaf	3260	1500	SSE 7 G10	46		60	33	Clear

Requested Parameters

Remarks

XXX Sky / Weather
 XXX Temperature
 XXX Relative Humidity
 XXX 20-ft Wind
 ... Ridge Top Wind
 XXX Chance of Wetting Rain
 ... Lightning Activity Level
 XXX Smoke Dispersion

Antlers (CTANT) is closest in elevation to project site.
 Sugarloaf (SLFC1) is 2000' above project site

FORECAST:

IF CONDITIONS BECOME UNREPRESENTATIVE,
 CONTACT THE NATIONAL WEATHER SERVICE.

SPOT FORECAST FOR NORTH...USFS
 NATIONAL WEATHER SERVICE SACRAMENTO CA
 1111 PM PST SUN DEC 28 2014

FORECAST IS BASED ON IGNITION TIME OF 0900 PST ON DECEMBER 29.



Incident Name	Munchkin
Incident Number	678
PCode	P53789
Jurisdiction	Forest Service

IF CONDITIONS BECOME UNREPRESENTATIVE...CONTACT THE NATIONAL WEATHER SERVICE.

.DISCUSSION...

CANADIAN COLD FRONT OVER OREGON WILL BE DROPPING SOUTHWARD ACROSS THE BURN SITE LATE TONIGHT AND TUESDAY. THIS WILL BRING MUCH COLDER TEMPERATURES...LIGHT SPOTTY SHOWERS AND THEN DRY BRISK NORTHERLY WINDS TO THE BURN SITE. THE CORE OF THE STRONGER WINDS IS FORECAST TO REMAIN SOUTH OF THE BURN SITE ON TUESDAY...BUT CONFIDENCE IS LOW TO MEDIUM ON THIS SPECIFIC DETAIL.

.TODAY (MONDAY)...

SKY/WEATHER.....MOSTLY SUNNY IN THE MORNING THEN BECOMING PARTLY CLOUDY.
 MAX TEMPERATURE.....46-51.
 MIN HUMIDITY.....32-38 PERCENT.
 WIND (20 FT).....
 SLOPE/VALLEY.....NORTH WINDS UP TO 7 MPH.
 CWR.....0 PERCENT.
 MIXING HEIGHT.....RISING TO 1000-1500 FT AGL IN THE AFTERNOON.
 MIXING WINDS.....NORTH UP TO 6 MPH.

.TONIGHT...

SKY/WEATHER.....MOSTLY CLOUDY. A SLIGHT CHANCE OF RAIN AND SNOW SHOWERS IN THE EVENING.
 MIN TEMPERATURE.....26-32.
 MAX HUMIDITY.....50-60 PERCENT.
 WIND (20 FT).....
 SLOPE/VALLEY.....NORTHEAST WINDS 4 TO 10 MPH.
 CWR.....10 PERCENT.
 MIXING HEIGHT.....500-1000 FT AGL.
 MIXING WINDS.....NORTHEAST 4 TO 9 MPH.

.TUESDAY...

SKY/WEATHER.....MOSTLY SUNNY.
 MAX TEMPERATURE.....36-41.
 MIN HUMIDITY.....22-29 PERCENT.
 WIND (20 FT).....
 SLOPE/VALLEY.....NORTH TO NORTHEAST WINDS 7 TO 12 MPH WITH POSSIBLE GUSTS TO 20 MPH MAINLY IN THE AFTERNOON.
 CWR.....0 PERCENT.
 MIXING HEIGHT.....RISING TO 1000-1500 FT AGL IN THE LATE MORNING AND AFTERNOON.
 MIXING WINDS.....NORTHEAST 10 TO 16 MPH.

FORECASTER...JHM
 REQUESTED BY...ROBERT HOLT
 REASON FOR REQUEST...PRESCRIBED



Incident Name	Munchkin
Incident Number	678
PCode	P53789
Jurisdiction	Forest Service

Please provide feedback:

[*Printer Friendly Version of Forecast*](#)

[Back to Spot List](#) [Copy Info to New Spot Request](#)



National Oceanic and Atmospheric Administration (NOAA)

[Privacy Policy](#)

National Weather Service
Fire & Public Weather Services Branch
Page Author: NWS Internet Services Team
Page last updated at 5:57 am PST 3/5/07



Incident Name	Munchkin
Incident Number	678
PCode	P53789
Jurisdiction	Forest Service

Safety Checklists

"Watch Outs"

"Watch Outs"		Dec 29 22:06
Fire not scouted and sized up	No	
In country not seen in daylight	No	
Safety zones and escape routes not identified	No	
Unfamiliar with weather and local factors influencing fire behavior	No	
Uninformed on strategy, tactics, and hazards	No	
Instructions and assignments not clear	No	
No communication link with crew members / supervisor	No	
Constructing fireline downhill with fire below	Yes	
Building fireline without a safe anchor point	No	
Attempting frontal assault on fire	Yes	
Unburned fuel between you and the fire	Yes	
Cannot see main fire, not in contact with anyone who can	No	
On a hillside where rolling material can ignite fuel below	Yes	
Weather is getting hotter and drier	No	
Wind increases and/or changes direction	No	
Getting frequent spot fires across the line	No	
Terrain and fuels make escape to safety zones difficult	Yes	
Taking nap near fireline	No	

Standard Orders



Incident Name	Munchkin
Incident Number	678
PCode	P53789
Jurisdiction	Forest Service

Standard Orders		Dec 29 22:07
Keep informed on fire weather conditions and forecast		Yes
Know what the fire is doing at all times		Yes
Base all actions on current and expected fire behavior		Yes
Have escape routes and safety zones, and make sure they are known		Yes
Post a lookout when there is possible danger		Yes
Be alert, keep calm, think clearly, and act decisively		Yes
Maintain prompt communications with your forces, your supervisor, and adjoining forces		Yes
Give clear instructions and be sure they are understood		Yes
Maintain control of your forces at all times		Yes
Fight fire aggressively, but provide for safety first		Yes

Decision Points

Decision Points		Dec 29 22:07
Controls in place for identified hazards? If no, reassess your situation		Yes
Are selected tactics based on expected fire behavior? If no, reassess your situation		Yes
Have instructions been given and understood? If no, reassess your situation		Yes

Urban Interface Watchouts

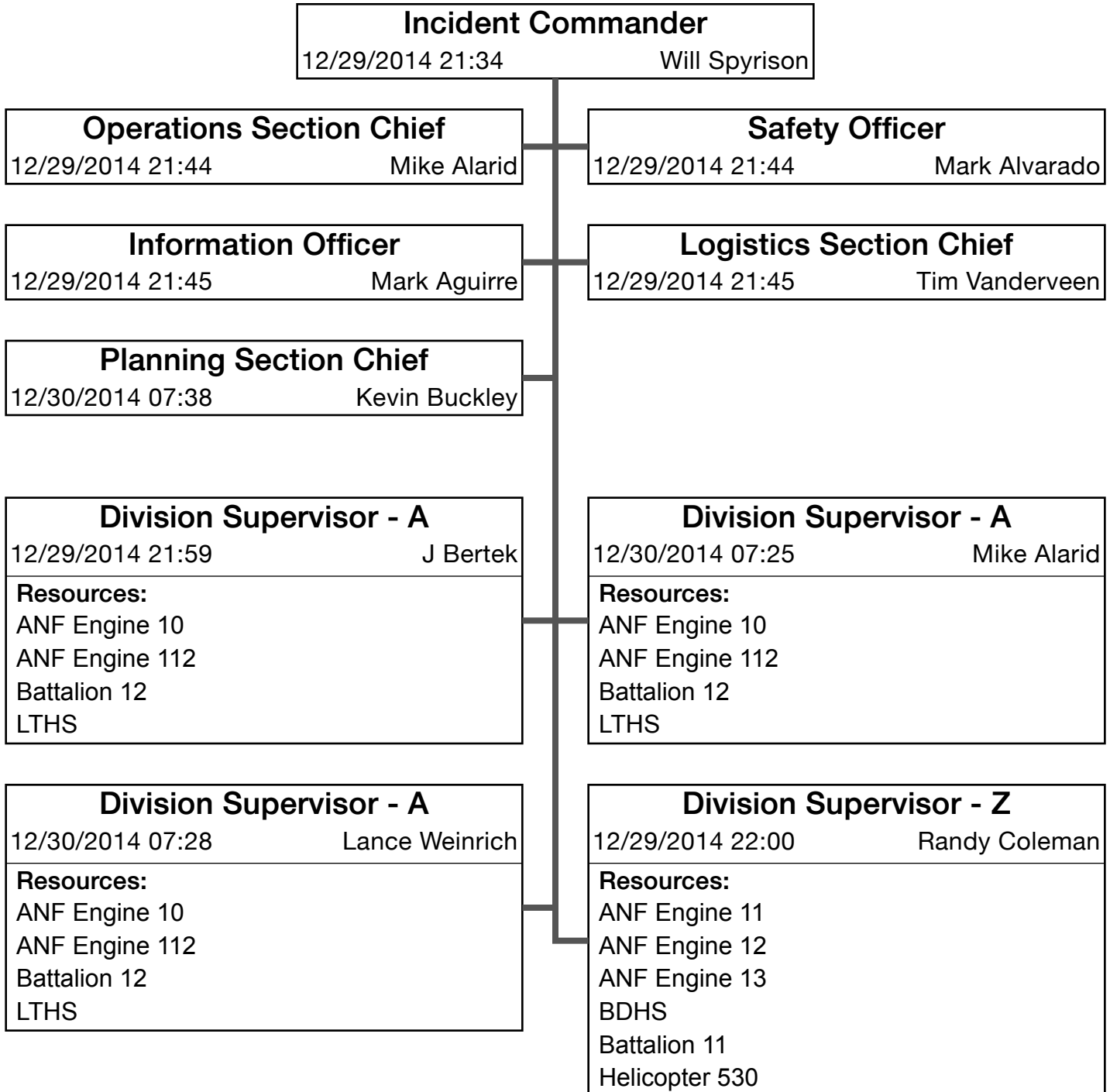
Urban Interface Watchouts		Dec 29 22:07
Poor access and narrow one-way roads		No
Wooden construction and wood shake roofs		No
Natural fuels 30' or closer to structures		Yes
Extreme Fire Behavior		Yes
Bridge load limits		No
Inadequate water supply		No
Structures in chimneys & chutes		Yes
Evacuation of public (Panic / Traffic)		Yes



Incident Name	Munchkin
Incident Number	678
PCode	P53789
Jurisdiction	Forest Service

Command Structure

ICS 207



Incident Name	Munchkin
Incident Number	678
PCode	P53789
Jurisdiction	Forest Service

Division Supervisor - Z	
12/30/2014 07:28	Lance Weinrich
Resources:	
ANF Engine 11	
ANF Engine 12	
ANF Engine 13	
BDHS	
Battalion 11	
Helicopter 530	

Division Supervisor - Z	
12/30/2014 07:26	Mike Alarid
Resources:	
ANF Engine 11	
ANF Engine 12	
ANF Engine 13	
BDHS	
Battalion 11	
Helicopter 530	



Incident Name	Munchkin
Incident Number	678
PCode	P53789
Jurisdiction	Forest Service

Map Sketch: Dec 29 21:54



Incident Name	Munchkin
Incident Number	678
PCode	P53789
Jurisdiction	Forest Service

Frequencies

ICS 205

FN F1	
Name	FN F1
Transmit	172.375
Receive	172.375
Tone	103.5
Remarks	Forest Net Direct

R5 Air/GND	
Name	R5 Air/GND
Transmit	170.000
Receive	170.000
Remarks	Air - Ground

TAC 1	
Name	TAC 1
Transmit	168.050
Receive	168.050
Remarks	Tactical

TAC 2	
Name	TAC 2
Transmit	168.200
Receive	168.200
Remarks	Tactical



Incident Name	Munchkin
Incident Number	678
PCode	P53789
Jurisdiction	Forest Service

Medical Plan

Medical Aid Procedure

Text	Clear all radio traffic for emergency traffic only in the event of an medical emergency or accident. Once medical emergency or accident has been mitigated announce over radio resume normal incident radio traffic
------	---

Medical Aid Station

Name	Munchkin
Location	ICP
Paramedics?	Yes

Ambulance Service

Name	Gold Coast
Location	ICP
Phone Number	818-235-7843
Paramedics?	No

Incident Ambulance

Name	Gold Coast
Location	ICP
Phone Number	626-354-4545
Paramedics?	Yes



Incident Name	Munchkin
Incident Number	678
PCode	P53789
Jurisdiction	Forest Service

Hospital	
Name	Grossman Burn Center
Address	7300 Medical Center Drive Woodland Hills CA 91307
Phone Number	818-236-1139
Travel Time (Air)	15m
Travel Time (Ground)	90m
Helipad?	Yes
Burn Center?	Yes

Hospital	
Name	Huntington Memorial
Address	100 West California Boulevard Pasadena, CA 91105
Phone Number	626-769-3729
Travel Time (Air)	10m
Travel Time (Ground)	60m
Helipad?	Yes
Burn Center?	No

